



Infor Education

Public Training Schedule

Published May 2017

infor

Education

Master Infor Products. Maximize your potential.

Infor's innovative applications will transform the way you work and accelerate your business.

Training is a critical piece that will help you realize these benefits to the greatest degree, and even reduce the total cost of ownership. A well-trained team that is confident in its ability to use software will make better decisions, faster, driving higher productivity and minimizing support costs. Infor Education provides convenient and cost-effective learning solutions that allow you and your employees to get up to speed.

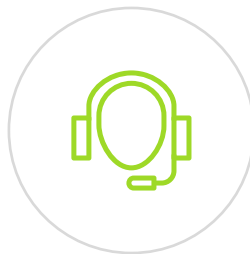
Scheduled classes

Infor Education courses help you get what you need, when you need it. You can receive training at your site, online, virtually or at an Infor location near you. Whatever you prefer you can choose according to your budget, schedule, and learning preferences.



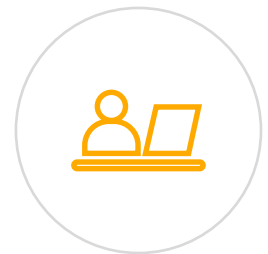
Instructor-led Classes

Face-to-face training in your office or at one of our education sites



Instructor-led Virtual Classes

Take classes from your own desk with the support of an instructor



Self-directed Learning

Flexible training taken at your own pace; includes a workbook, live training environment, social collaboration and access to an instructor

Use the public instructor-led scheduled classes to improve your skills and business operations. In the location column, you can see if the session is a face to face or a virtual class. Course materials are in English, however, courses will be delivered in local languages in France, Germany, as well as in other regions, where possible.

If you do not find the course or schedule you are looking for, please contact us for assistance to find the best training solution.

Schedule your Infor Education classes today!

Training Levels

Classes are offered across three levels covering everything from product overview to in depth technical classes.



Level 1: Overview & Use

Provides product overview and knowledge necessary to use the system.



Level 2: Configuration & Administration

Accelerates the deployment of Infor software through knowledge of configuration options and administration.



Level 3: Installation & Integration

Explores software installation and integration with other systems, as well as how to extend the application.

Pricing & Cancellation policy

Public instructor-led training is charged at \$600/person per day for Overview & Use courses, and \$750/person per day for, Configuration, Administration, Installation and Integration courses. Exception is Mongoose training, charged at \$150/person per day and Fourth Shift training, charged at \$500/person per day.

Invoicing will occur at time of registration. If you cancel your registration at least 11 business days (5 business days for virtual) prior to the start date, then the registration fee is available to use toward another Education class within a 90 day period. Education will assist in rescheduling you for another class. If you are not able to reschedule, then Education will assist in refunding the course fee.

Infor Education makes every effort to teach scheduled classes, but sometimes unforeseen circumstances arise and a course gets cancelled. If Infor Education postpones your class: we will provide you with as much advance notice as reasonably possible under the circumstance — in most cases, 10 business days. Course schedules are updated regularly; however, class dates and locations are subject to change. For the most current information, please contact us.

We are now offering an early bird discount when you register early for our instructor-led classes!

Use code EB05N20* (USA) or EB05E20* (all other locations) when registering for an instructor-led class starting July or later to receive a 20% discount. Check out the available classes in this schedule and make sure you register early. *Expires May 31

For more information about courses and how to register, please contact:

- **For Americas:** EducationAmericas@infor.com
- **For Europe, the Middle East and Africa:** EducationEMEA@infor.com
- **For Asia Pacific:** EducationAPAC@infor.com

Upcoming dates for



TechEd

Infor TechEd for M3

Stockholm, Sweden
September 4–6, 2017

Save the date

Infor TechEd for CloudSuite Business, CloudSuite Industrial, and Syteline

St Paul, Minnesota
September 25–27, 2017

Save the date

Infor TechEd for M3

Sydney, Australia
October 18–20, 2017

Save the date

Featured this year:



Keynotes



Deep Dives



Open Labs



**Panel
Discussions**



**Food &
Beverage**



**Reception &
Entertainment**

Save the dates for our next 3 Infor TechEd events!

Infor TechEd is a technical education conference focused on helping you get the most out of your enterprise software suite. Join us for the opportunity to get face-time with product experts and developers.

Click the links above or email TechEd@infor.com to learn more or to register

[Watch our video featuring why you should attend](#)

Public Schedule

TABLE OF CONTENTS

| | |
|--|----|
| Infor CloudSuite Business / CloudSuite Industrial / SyteLine | 2 |
| Infor Cloverleaf | 3 |
| Infor CPQ (PCM) | 4 |
| Infor CRM | 5 |
| Infor Distribution SX.e | 6 |
| Infor EAM / MP2 | 7 |
| Infor EPAK | 8 |
| Infor Fourth Shift | 9 |
| Infor HCM | 10 |
| Infor Lawson | 11 |
| Infor M3 | 13 |
| Infor Mongoose | 15 |
| Infor Technology Platform | 16 |

If you are unable to take an instructor-led training course, the following courses are available as self-directed learning. For more information on self-directed learning, see the [SDL flyer](#).

| | |
|--|----|
| Infor Lawson – Self-Directed Learning | 17 |
| Infor HCM – Self-Directed Learning | 19 |
| Infor CloudSuite Financials & Supply Management – Self-Directed Learning | 21 |
| Infor M3 – Self-Directed Learning | 22 |
| Infor CPQ (PCM) – Self-Directed Learning | 25 |
| Infor LN – Self-Directed Learning | 26 |
| Infor Technology Platform – Self-Directed Learning | 27 |
| Infor d/EPM – Self-Directed Learning | 28 |



Infor CloudSuite Business / CloudSuite Industrial / SyteLine

| Level | Course Name | Location Name | Start Date | End Date | Course Links | |
|-----------------------------|---|------------------|------------|----------|------------------------|---------------------|
| Financial Management | | | | | | |
| 1 | CloudSuite Business / CloudSuite Industrial: v9 Using Accounts Payable | Virtual Americas | 27-Apr | 27-Apr | Global | USA |
| 1 | CloudSuite Business / CloudSuite Industrial: v9 Using the Excel Financial Reporting Toolset | Virtual Americas | 28-Apr | 28-Apr | Global | USA |
| Engineering | | | | | | |
| 1 | CloudSuite Business / CloudSuite Industrial: v9 Using Bills of Materials and Engineering Change Notices (BOM/ECN) | Virtual Americas | 27-Apr | 27-Apr | Global | USA |
| Technology | | | | | | |
| 3 | CloudSuite Business / CloudSuite Industrial: v9 Extending the Application with Mongoose | Virtual Americas | 27-Apr | 28-Apr | Global | USA |

The Public Schedule presents currently scheduled training events.
 For a complete listing, please visit campus.infor.com (US) or campus-nonus.infor.com (all other locations).



Infor Cloverleaf

| Level | Course Name | Location Name | Start Date | End Date | Course Links | |
|-------|---|--------------------------|------------|----------|------------------------|---------------------|
| 3 | Cloverleaf: Developing Cloverleaf Networks - Basics | US - St. Paul MN | 8-May | 12-May | Global | USA |
| 3 | Cloverleaf: Developing Cloverleaf Networks - Basics | US - Colorado Springs CO | 5-Jun | 9-Jun | Global | USA |
| 3 | Cloverleaf: Developing Cloverleaf Networks - Basics | Virtual Americas | 12-Jun | 16-Jun | Global | USA |
| 3 | Cloverleaf: Developing Cloverleaf Networks - Basics | US - New York NY | 24-Jul | 28-Jul | Global | USA |
| 3 | Cloverleaf: Developing Cloverleaf Networks - Basics | Virtual Americas | 14-Aug | 18-Aug | Global | USA |
| 2 | Cloverleaf: Administering Cloverleaf | US - St. Paul MN | 22-May | 25-May | Global | USA |
| 2 | Cloverleaf: Administering Cloverleaf | US - Colorado Springs CO | 7-Aug | 10-Aug | Global | USA |
| 3 | Cloverleaf: Programming with Tool Command Language (Tcl) | US - New York NY | 26-Jun | 30-Jun | Global | USA |
| 3 | Cloverleaf: Programming with Tool Command Language (Tcl) | US - Colorado Springs CO | 28-Aug | 1-Sep | Global | USA |
| 3 | Cloverleaf: Developing Cloverleaf Networks - Intermediate | US - St. Paul MN | 15-May | 19-May | Global | USA |
| 3 | Cloverleaf: Developing Cloverleaf Networks - Intermediate | Virtual Americas | 19-Jun | 23-Jun | Global | USA |
| 3 | Cloverleaf: Developing Cloverleaf Networks - Intermediate | US - New York NY | 31-Jul | 4-Aug | Global | USA |
| 3 | Cloverleaf: Developing Cloverleaf Networks - Intermediate | Virtual Americas | 21-Aug | 25-Aug | Global | USA |
| 3 | Cloverleaf: Developing Cloverleaf Networks - Advanced | US - Chicago IL | 15-May | 19-May | Global | USA |
| 3 | Cloverleaf: Developing Cloverleaf Networks - Advanced | US - St. Paul MN | 10-Jul | 14-Jul | Global | USA |

Learning tracks recommendations:

- Developing Cloverleaf Networks - Basic – Anytime
- Administering Cloverleaf - Any time after Basics
- Programming with Tool Command Language (Tcl) – Couple months after taking Basics
- Developing Cloverleaf Networks - Intermediate – 6 months after taking Basics & TCL, and couple of months' experience working with Cloverleaf.
- Developing Cloverleaf Networks - Advanced– 6 months to a year after taking Intermediate, also with a least 6 months' experience working with Cloverleaf after Intermediate.



Infor CPQ (PCM)

| Level | Course Name | Location Name | Start Date | End Date | Course Links | |
|-------|---|------------------|------------|----------|------------------------|---------------------|
| 1 | CPQ: (PCM) Using Infor Product Configurator | Virtual Americas | 12-Jun | 15-Jun | Global | USA |
| 1 | CPQ: (PCM) Using Infor Product Configurator | Virtual Americas | 17-Jul | 20-Jul | Global | USA |
| 1 | CPQ: (PCM) Using Infor Product Configurator | US - Columbus OH | 21-Aug | 24-Aug | Global | USA |
| 1 | CPQ: (PCM) Using Infor Sales Portal | Virtual Americas | 1-Jun | 2-Jun | Global | USA |
| 1 | CPQ: (PCM) Using Infor Sales Portal | Virtual Americas | 28-Aug | 29-Aug | Global | USA |

The Public Schedule presents currently scheduled training events.
For a complete listing, please visit campus.infor.com (US) or campus-nonus.infor.com (all other locations).



Infor CRM

| Level | Course Name | Location Name | Start Date | End Date | Course Links | |
|---|------------------------------------|------------------|------------|----------|------------------------|---------------------|
| Overview & Use | | | | | | |
| 1 | Infor CRM: v8.3 Using Web | Virtual Americas | 8-May | 10-May | Global | USA |
| 1 | Infor CRM: v8.3 Using Web | Virtual Americas | 12-Jun | 14-Jun | Global | USA |
| 1 | Infor CRM: v8.3 Using Web | Virtual Americas | 10-Jul | 10-Jul | Global | USA |
| Configuration & Administration | | | | | | |
| 2 | Infor CRM: v8.3 Administering | Virtual Americas | 8-May | 11-May | Global | USA |
| 2 | Infor CRM: v8.3 Administering | Virtual Americas | 12-Jun | 15-Jun | Global | USA |
| 2 | Infor CRM: v8.3 Administering | Virtual Americas | 10-Jul | 13-Jul | Global | USA |
| Development | | | | | | |
| 3 | Infor CRM: v8.3 Developing Web | Virtual Americas | 8-May | 11-May | Global | USA |
| 3 | Infor CRM: v8.3 Developing Web | Virtual Americas | 12-Jun | 15-Jun | Global | USA |
| 3 | Infor CRM: v8.3 Developing Web | Virtual Americas | 10-Jul | 13-Jul | Global | USA |
| Integration | | | | | | |
| 3 | Infor CRM: Advanced Analytics v3.0 | Virtual Americas | 8-May | 9-May | Global | USA |
| 3 | Infor CRM: Advanced Analytics v3.0 | Virtual Americas | 12-Jun | 13-Jun | Global | USA |
| 3 | Infor CRM: Advanced Analytics v3.0 | Virtual Americas | 10-Jul | 13-Jul | Global | USA |

The Public Schedule presents currently scheduled training events.
 For a complete listing, please visit campus.infor.com (US) or campus-nonus.infor.com (all other locations).



Infor Distribution SX.e

| Level | Course Name | Location Name | Start Date | End Date | Course Links | |
|-------|---|------------------|------------|----------|------------------------|---------------------|
| | Technology | | | | | |
| 1 | Distribution SX.e: Introduction to PROGRESS | Virtual Americas | 6-Jun | 8-Jun | Global | USA |

The Public Schedule presents currently scheduled training events.
For a complete listing, please visit campus.infor.com (US) or campus-nonus.infor.com (all other locations).



Infor EAM / MP2

| Level | Course Name | Location Name | Start Date | End Date | Course Links | |
|------------------|---|--------------------|------------|----------|------------------------|---------------------|
| Infor EAM | | | | | | |
| 1 | EAM: Foundation | Virtual Americas | 5-Jun | 9-Jun | Global | USA |
| 1 | EAM: Foundation | US - Chicago IL | 7-Aug | 11-Aug | Global | USA |
| 1 | EAM: Foundation (French) | FR - Garches | 4-Sep | 8-Sep | Global | USA |
| 2 | EAM: Configuring KPIs, Inbox, and Grid Designer | Virtual Americas | 30-May | 2-Jun | Global | USA |
| 2 | EAM: Designing Reports with the Advanced Reporting Tool | US - Greenville SC | 12-Jun | 16-Jun | Global | USA |
| 2 | EAM: Configuration and System Planning | Virtual Americas | 26-Jun | 30-Jun | Global | USA |
| 2 | EAM: Configuration and System Planning | US - Chicago IL | 28-Aug | 1-Sep | Global | USA |
| Infor MP2 | | | | | | |
| 1 | MP2: Essentials | Virtual Americas | 12-Jun | 15-Jun | Global | USA |

The Public Schedule presents currently scheduled training events.
 For a complete listing, please visit campus.infor.com (US) or campus-nonus.infor.com (all other locations).



Infor EPAK

| Level | Course Name | Location Name | Start Date | End Date | Course Links | |
|-------|--------------------------|---------------|------------|----------|------------------------|---------------------|
| 1 | EPAK: Developing in EPAK | Virtual EMEA | 5-Jun | 9-Jun | Global | USA |

The Public Schedule presents currently scheduled training events.
For a complete listing, please visit campus.infor.com (US) or campus-nonus.infor.com (all other locations).



Infor Fourth Shift

| Level | Course Name | Location Name | Start Date | End Date | Course Links | |
|-------|---|------------------|------------|----------|------------------------|---------------------|
| 1 | Fourth Shift: Accounts Payable Overview | Virtual Americas | 10-May | 11-May | Global | USA |
| 1 | Fourth Shift: Accounts Payable Overview | Virtual Americas | 21-Jun | 22-Jun | Global | USA |
| 1 | Fourth Shift: Accounts Receivable Overview | Virtual Americas | 8-May | 9-May | Global | USA |
| 1 | Fourth Shift: Accounts Receivable Overview | Virtual Americas | 19-Jun | 20-Jun | Global | USA |
| 1 | Fourth Shift: Backflushing | Virtual Americas | 12-May | 12-May | Global | USA |
| 1 | Fourth Shift: Custom Products Manufacturing Module Overview | Virtual Americas | 23-Jun | 23-Jun | Global | USA |
| 1 | Fourth Shift: Introduction to Manufacturing | Virtual Americas | 15-May | 26-May | Global | USA |
| 1 | Fourth Shift: Introduction to the System | Virtual Americas | 4-May | 5-May | Global | USA |
| 1 | Fourth Shift: Introduction to the System | Virtual Americas | 5-Jun | 6-Jun | Global | USA |
| 1 | Fourth Shift: Manufacturing Accounting Foundation | US - St. Paul MN | 12-Jun | 16-Jun | Global | USA |
| 1 | Fourth Shift: Receiving Details Overview | Virtual Americas | 2-May | 2-May | Global | USA |
| 1 | Fourth Shift: Shipping Details Overview | Virtual Americas | 3-May | 3-May | Global | USA |
| 1 | Fourth Shift: Using the Engineering Module | Virtual Americas | 26-Jun | 30-Jun | Global | USA |
| 1 | Fourth Shift: Using the G/L Report Writer | Virtual Americas | 7-Jun | 9-Jun | Global | USA |
| 1 | Fourth Shift: Using the Shop Floor Module | Virtual Americas | 1-May | 1-May | Global | USA |

The Public Schedule presents currently scheduled training events.
For a complete listing, please visit campus.infor.com (US) or campus-nonus.infor.com (all other locations).



Infor HCM

| Level | Course Name | Location Name | Start Date | End Date | Course Links | |
|-----------------------------------|--|------------------|------------|----------|--------------|-----|
| Human Resource Management | | | | | | |
| 1 | Lawson: Using Global Human Resources | Virtual Americas | 8-May | 12-May | Global | USA |
| 1 | Lawson: Using Global Human Resources | Virtual Americas | 14-Aug | 18-Aug | Global | USA |
| 1 | Lawson: Processing Payroll | Virtual Americas | 19-Jun | 22-Jun | Global | USA |
| 1 | Lawson: Using Absence Management | Virtual Americas | 22-May | 25-May | Global | USA |
| 2 | Lawson HRM: Designing the Human Resources Structure | Virtual Americas | 10-Jul | 12-Jul | Global | USA |
| 2 | Lawson HRM: Configuring and Administering Benefits | Virtual Americas | 24-Jul | 26-Jul | Global | USA |
| 2 | Lawson: Administering Employee and Manager Self-Service | Virtual Americas | 8-Jun | 9-Jun | Global | USA |
| 2 | Lawson HRM: Configuring and Administering Personnel | Virtual Americas | 5-Jun | 7-Jun | Global | USA |
| 2 | Lawson HRM: Configuring and Administering Personnel | Virtual Americas | 11-Sep | 13-Sep | Global | USA |
| 1 | Lawson: Using Human Resources Functional Reporting | Virtual Americas | 13-Jul | 14-Jul | Global | USA |
| Talent Management | | | | | | |
| 2 | Talent Management: v11 Configuring and Administering Compensation Management | Virtual Americas | 7-Aug | 9-Aug | Global | USA |
| 2 | Talent Management: v11 Configuring and Administering Development Planning | Virtual Americas | 15-May | 17-May | Global | USA |
| 2 | Talent Management: v11 Configuring and Administering Goal and Performance Management | Virtual Americas | 10-Aug | 11-Aug | Global | USA |
| 2 | Talent Management: v11 Configuring and Administering Succession Management | Virtual Americas | 18-May | 19-May | Global | USA |
| 2 | Talent Management: v11 Configuring and Administering Talent Acquisition | Virtual Americas | 26-Jun | 28-Jun | Global | USA |
| Global HR | | | | | | |
| 1 | Global HR: v11 Foundation | Virtual Americas | 5-Jun | 6-Jun | Global | USA |
| 1 | Global HR: v11 Foundation | Virtual Americas | 7-Sep | 8-Sep | Global | USA |
| 2 | Global HR: v11 Configuring and Administering Absence Management and Time Entry | Virtual Americas | 24-Jul | 27-Jul | Global | USA |
| 2 | Global HR: v11 Configuring and Administering Benefits | Virtual Americas | 17-Jul | 19-Jul | Global | USA |
| 2 | Global HR: v11 Configuring and Administering Global HR | Virtual Americas | 12-Jun | 16-Jun | Global | USA |
| 2 | Global HR: v11 Configuring and Administering Security | Virtual Americas | 11-May | 12-May | Global | USA |
| 2 | Global HR: v11 Configuring and Administering Security | Virtual Americas | 17-Jul | 18-Jul | Global | USA |
| 2 | Global HR: v11 Designing Reports | Virtual Americas | 20-Jul | 20-Jul | Global | USA |
| Infor Workforce Management | | | | | | |
| 2 | WFM: Configuring and Administering Time and Attendance | Virtual Americas | 8-May | 11-May | Global | USA |
| 2 | WFM: Configuring and Administering Time and Attendance | Virtual Americas | 21-Aug | 24-Aug | Global | USA |

The Public Schedule presents currently scheduled training events.
For a complete listing, please visit campus.infor.com (US) or campus-nonus.infor.com (all other locations).



Infor Lawson

| Level | Course Name | Location Name | Start Date | End Date | Course Links | |
|--|--|------------------|------------|----------|------------------------|---------------------|
| Human Resource Management | | | | | | |
| 1 | Lawson: Using Global Human Resources | Virtual Americas | 8-May | 12-May | Global | USA |
| 1 | Lawson: Using Global Human Resources | Virtual Americas | 14-Aug | 18-Aug | Global | USA |
| 1 | Lawson: Processing Payroll | Virtual Americas | 19-Jun | 22-Jun | Global | USA |
| 1 | Lawson: Using Absence Management | Virtual Americas | 22-May | 25-May | Global | USA |
| 2 | Lawson HRM: Designing the Human Resources Structure | Virtual Americas | 10-Jul | 12-Jul | Global | USA |
| 2 | Lawson HRM: Configuring and Administering Benefits | Virtual Americas | 24-Jul | 26-Jul | Global | USA |
| 2 | Lawson: Administering Employee and Manager Self-Service | Virtual Americas | 8-Jun | 9-Jun | Global | USA |
| 2 | Lawson HRM: Configuring and Administering Personnel | Virtual Americas | 5-Jun | 7-Jun | Global | USA |
| 2 | Lawson HRM: Configuring and Administering Personnel | Virtual Americas | 11-Sep | 13-Sep | Global | USA |
| 1 | Lawson: Using Human Resources Functional Reporting | Virtual Americas | 13-Jul | 14-Jul | Global | USA |
| Financials | | | | | | |
| 2 | Lawson: Administering AP Invoice Automation | Virtual Americas | 24-Jul | 26-Jul | Global | USA |
| 2 | Lawson: Configuring and Administering Accounts Receivable | Virtual Americas | 8-Aug | 10-Aug | Global | USA |
| 2 | Lawson: Configuring and Administering Billing | Virtual Americas | 7-Aug | 7-Aug | Global | USA |
| 2 | Lawson: Configuring and Administering Close Management | Virtual Americas | 27-Jul | 28-Jul | Global | USA |
| 2 | Lawson: Configuring and Administering General Ledger | Virtual Americas | 17-Jul | 20-Jul | Global | USA |
| 2 | Lawson: Configuring and Administering General Ledger Allocations | Virtual Americas | 21-Jul | 21-Jul | Global | USA |
| 2 | Lawson: Configuring and Administering Invoice Matching | Virtual Americas | 8-May | 10-May | Global | USA |
| Supply Management | | | | | | |
| 2 | Lawson: Configuring and Administering Contract Management | Virtual Americas | 24-Jul | 28-Jul | Global | USA |
| 2 | Lawson: Configuring and Administering Strategic Sourcing and Supplier Portal | Virtual Americas | 21-Aug | 23-Aug | Global | USA |
| Business Process Management | | | | | | |
| 1 | Lawson: Using Spreadsheet Designer for Microsoft Excel | Virtual Americas | 30-Jun | 30-Jun | Global | USA |
| 2 | Lawson: Configuring and Administering Process Automation | Virtual Americas | 15-May | 19-May | Global | USA |
| 2 | Lawson: Configuring and Administering Process Automation | Virtual Americas | 22-May | 26-May | Global | USA |
| 2 | Lawson: Configuring and Administering Process Automation | Virtual Americas | 19-Jun | 23-Jun | Global | USA |
| 2 | Lawson: Configuring and Administering Process Automation | Virtual Americas | 24-Jul | 28-Jul | Global | USA |
| 2 | Lawson: Configuring and Administering Process Automation | Virtual Americas | 14-Aug | 18-Aug | Global | USA |
| 2 | Lawson: v9x - v10x Administering Process Automation Differences | Virtual Americas | 15-Jun | 16-Jun | Global | USA |
| Enterprise Performance Management | | | | | | |
| 2 | Lawson: Administering Business Intelligence | Virtual Americas | 11-Sep | 15-Sep | Global | USA |
| 2 | Lawson: Designing Lawson Smart Reports | Virtual Americas | 22-May | 23-May | Global | USA |
| Technology | | | | | | |
| 1 | Lawson: Using Microsoft Office Add-Ins - Basic | Virtual Americas | 16-Jun | 16-Jun | Global | USA |
| 2 | Lawson: Administering Configuration Console | Virtual Americas | 15-May | 18-May | Global | USA |
| 2 | Lawson: Administering Configuration Console | Virtual Americas | 19-Jun | 22-Jun | Global | USA |
| 2 | Lawson: Administering Configuration Console | Virtual Americas | 17-Jul | 20-Jul | Global | USA |

The Public Schedule presents currently scheduled training events.

For a complete listing, please visit campus.infor.com (US) or campus-nonus.infor.com (all other locations).

Public Schedule



Level 1: Overview and Use



Level 2: Configuration and Administration



Level 3: Installation and Integration

| Level | Course Name | Location Name | Start Date | End Date | Course Links | |
|-------|---|------------------|------------|----------|--------------|-----|
| 2 | Lawson: Administering Configuration Console | Virtual Americas | 8-Aug | 11-Aug | Global | USA |
| 2 | Lawson: Administering Configuration Console | Virtual Americas | 11-Sep | 14-Sep | Global | USA |
| 2 | Lawson: Administering Infor Security Services | Virtual Americas | 5-Jun | 7-Jun | Global | USA |
| 2 | Lawson: Administering Infor Security Services | Virtual Americas | 26-Jul | 28-Jul | Global | USA |
| 2 | Lawson: Administering Landmark Foundation | Virtual Americas | 8-May | 12-May | Global | USA |
| 2 | Lawson: Administering Landmark Foundation | Virtual Americas | 5-Jun | 9-Jun | Global | USA |
| 2 | Lawson: Administering Landmark Foundation | US - Chicago IL | 17-Jul | 21-Jul | Global | USA |
| 2 | Lawson: Administering Landmark Foundation | Virtual Americas | 31-Jul | 4-Aug | Global | USA |
| 2 | Lawson: Administering Landmark Foundation | Virtual Americas | 28-Aug | 1-Sep | Global | USA |
| 2 | Lawson: Administering Landmark Security | Virtual Americas | 12-Jun | 15-Jun | Global | USA |
| 2 | Lawson: Administering Landmark Security | Virtual Americas | 7-Aug | 10-Aug | Global | USA |
| 2 | Lawson: Administering Lawson Data | Virtual Americas | 20-Jul | 21-Jul | Global | USA |
| 2 | Lawson: Administering Smart Office | Virtual Americas | 11-May | 12-May | Global | USA |
| 2 | Lawson: Administering Smart Office | Virtual Americas | 3-Aug | 4-Aug | Global | USA |
| 2 | Lawson: Administering Users | Virtual Americas | 22-May | 24-May | Global | USA |
| 2 | Lawson: Administering Users | Virtual Americas | 21-Aug | 23-Aug | Global | USA |
| 2 | Lawson: Creating Advanced Security Rules | Virtual Americas | 5-Jun | 7-Jun | Global | USA |
| 2 | Lawson: v10 Administering Security | Virtual Americas | 15-May | 18-May | Global | USA |
| 2 | Lawson: v10 Administering Security | Virtual Americas | 26-Jun | 29-Jun | Global | USA |
| 2 | Lawson: v10 Administering Security | Virtual Americas | 31-Jul | 3-Aug | Global | USA |
| 2 | Lawson: v10 Administering Security | Virtual Americas | 5-Sep | 8-Sep | Global | USA |
| 2 | Lawson: v10 Administering System Foundation for UNIX | Virtual Americas | 19-Jun | 23-Jun | Global | USA |
| 2 | Lawson: v10 Administering System Foundation for Windows | Virtual Americas | 22-May | 26-May | Global | USA |
| 2 | Lawson: v10 Administering System Foundation for Windows | Virtual Americas | 26-Jun | 30-Jun | Global | USA |
| 2 | Lawson: v10 Administering System Foundation for Windows | Virtual Americas | 14-Aug | 18-Aug | Global | USA |
| 2 | Lawson: v9x - v10x Administering System Foundation Differences | Virtual Americas | 8-May | 10-May | Global | USA |
| 2 | Lawson: v9x - v10x Administering System Foundation Differences | Virtual Americas | 31-Jul | 2-Aug | Global | USA |
| 3 | Lawson: Creating Landing Pages with Landing Page Designer for Landmark Applications | Virtual Americas | 19-May | 19-May | Global | USA |
| 3 | Lawson: Creating Landing Pages with Landing Page Designer for Landmark Applications | Virtual Americas | 23-Jun | 23-Jun | Global | USA |
| 3 | Lawson: Creating Landing Pages with Landing Page Designer for Landmark Applications | Virtual Americas | 21-Jul | 21-Jul | Global | USA |
| 3 | Lawson: Customizing Lawson Applications with Design Studio and JavaScript | Virtual Americas | 12-Jun | 14-Jun | Global | USA |
| 3 | Lawson: Developing Mashups with Mashup Designer | Virtual Americas | 6-Sep | 8-Sep | Global | USA |
| 3 | Lawson: Troubleshooting Infor Security Services | Virtual Americas | 6-Jul | 7-Jul | Global | USA |
| 3 | Lawson: Troubleshooting Infor Security Services | Virtual Americas | 24-Aug | 25-Aug | Global | USA |
| 2 | Infor Ming.le: Configuring Infor Ming.le with Infor Lawson Applications | Virtual Americas | 11-May | 12-May | Global | USA |
| 2 | Infor Ming.le: Configuring Infor Ming.le with Infor Lawson Applications | Virtual Americas | 17-Aug | 18-Aug | Global | USA |

The Public Schedule presents currently scheduled training events.
 For a complete listing, please visit campus.infor.com (US) or campus-nonus.infor.com (all other locations).



Infor M3

| Level | Course Name | Location Name | Start Date | End Date | Course Links | |
|------------------------------------|--|------------------|------------|----------|------------------------|---------------------|
| Foundation | | | | | | |
| 1 | M3: v13x Introducing the Solution | Virtual Americas | 30-May | 30-May | Global | USA |
| 1 | M3: v13x Introducing the Solution | Virtual Americas | 31-Jul | 31-Jul | Global | USA |
| 1 | M3: v13x Introducing the Technology | Virtual Americas | 26-Jun | 26-Jun | Global | USA |
| 1 | M3: v13x Manufacturing Foundation | SE - Linkoping | 19-Jun | 22-Jun | Global | USA |
| 1 | M3: v13x Manufacturing Foundation | Virtual Americas | 20-Jun | 23-Jun | Global | USA |
| 1 | M3: v13x Using H5 - Introduction | Virtual Americas | 19-Jun | 19-Jun | Global | USA |
| 1 | M3: v13x Using Smart Office - Introduction | SE - Linkoping | 19-Jun | 19-Jun | Global | USA |
| 1 | M3: v13x Using Smart Office - Introduction | Virtual Americas | 19-Jun | 19-Jun | Global | USA |
| 2 | M3: v13x Configuring ION Enterprise Search | Virtual Americas | 21-Jul | 21-Jul | Global | USA |
| 2 | M3: v13x Using Smart Office - Advanced | Virtual Americas | 23-Jun | 23-Jun | Global | USA |
| Financial Management | | | | | | |
| 2 | M3: v13x Configuring Financial Accounting | Virtual Americas | 15-May | 19-May | Global | USA |
| 2 | M3: v13x Configuring Costing and Internal Accounting | Virtual Americas | 31-May | 2-Jun | Global | USA |
| Manufacturing Operations | | | | | | |
| 2 | M3: v13x Configuring Manufacturing Orders | Virtual Americas | 2-Aug | 4-Aug | Global | USA |
| Supply Chain Management | | | | | | |
| 2 | M3: v13x Configuring Purchase Orders | Virtual EMEA | 2-May | 5-May | Global | USA |
| Business Process Management | | | | | | |
| 2 | M3: v13x Administering M3 Enterprise Collaborator (MEC) | Virtual Americas | 1-May | 2-May | Global | USA |
| 2 | M3: v13x Administering M3 Enterprise Collaborator (MEC) | SE - Linkoping | 29-May | 30-May | Global | USA |
| 3 | M3: v13x Developing in M3 Enterprise Collaborator (MEC) | Virtual Americas | 3-May | 5-May | Global | USA |
| 3 | M3: v13x Developing in M3 Enterprise Collaborator (MEC) | SE - Linkoping | 31-May | 2-Jun | Global | USA |
| 3 | M3: v13x Developing Smart Office Personalized Script | Virtual Americas | 24-Jul | 24-Jul | Global | USA |
| 3 | M3: v13x Developing with the M3 Adaptation Kit (MAK) | SE - Stockholm | 4-May | 5-May | Global | USA |
| 3 | M3: v13x Programming in Java - Introduction | SE - Stockholm | 17-May | 19-May | Global | USA |
| 3 | M3: v13x Programming in Java - Advanced | SE - Stockholm | 29-May | 2-Jun | Global | USA |
| 3 | M3: v13x Programming in the Software Development Kit (SDK) | Virtual Americas | 25-Jul | 26-Jul | Global | USA |
| System Foundation | | | | | | |
| 2 | M3: v13x Administering Documents and Media | SE - Stockholm | 12-May | 12-May | Global | USA |
| 2 | M3: v13x Administering LifeCycle Manager | Virtual Americas | 27-Jun | 27-Jun | Global | USA |
| 2 | M3: v13x Administering Security | Virtual Americas | 28-Jun | 29-Jun | Global | USA |
| 2 | M3: v13x Administering Smart Office | Virtual Americas | 30-Jun | 30-Jun | Global | USA |
| 2 | M3: v13x Administering Smart Office | Virtual EMEA | 16-May | 16-May | Global | USA |
| 2 | M3: v13x Administering the System - Introduction | Virtual Americas | 5-Jun | 6-Jun | Global | USA |
| 2 | M3: v13x Administering the System - Advanced | Virtual Americas | 7-Jun | 8-Jun | Global | USA |
| 2 | M3: v13x Configuring Ad Hoc Reports | Virtual EMEA | 7-Jun | 7-Jun | Global | USA |
| 2 | M3: v13x Configuring M3 Report Manager | SE - Stockholm | 26-Jun | 26-Jun | Global | USA |

The Public Schedule presents currently scheduled training events.

For a complete listing, please visit campus.infor.com (US) or campus-nonus.infor.com (all other locations).

Public Schedule



Level 1: Overview and Use



Level 2: Configuration and Administration



Level 3: Installation and Integration

| Level | Course Name | Location Name | Start Date | End Date | Course Links | |
|-------|---|------------------|------------|----------|------------------------|---------------------|
| 3 | M3: v13x Customizing Reports with Output Designer | SE - Stockholm | 9-May | 11-May | Global | USA |
| 3 | M3: v13x Migrating Data with the SmartData Tool | Virtual Americas | 27-Jul | 27-Jul | Global | USA |

The Public Schedule presents currently scheduled training events.
For a complete listing, please visit campus.infor.com (US) or campus-nonus.infor.com (all other locations).



Infor Mongoose

| Level | Course Name | Location Name | Start Date | End Date | Course Links | |
|-------|--|------------------|------------|----------|------------------------|---------------------|
| 3 | Mongoose: Developing Applications Foundation Workshop Part 1 | Virtual Americas | 15-May | 18-May | Global | USA |
| 3 | Mongoose: Developing Applications Foundation Workshop Part 1 | Virtual Americas | 5-Jun | 8-Jun | Global | USA |
| 3 | Mongoose: Developing Applications Foundation Workshop Part 1 | Virtual Americas | 19-Jun | 22-Jun | Global | USA |
| 3 | Mongoose: Developing Applications Foundation Workshop Part 1 | Virtual Americas | 17-Jul | 20-Jul | Global | USA |
| 3 | Mongoose: Developing Applications Foundation Workshop Part 2 | Virtual Americas | 8-May | 11-May | Global | USA |
| 3 | Mongoose: Developing Applications Foundation Workshop Part 2 | Virtual Americas | 22-May | 25-May | Global | USA |
| 3 | Mongoose: Developing Applications Foundation Workshop Part 2 | Virtual Americas | 12-Jun | 15-Jun | Global | USA |
| 3 | Mongoose: Developing Applications Foundation Workshop Part 2 | Virtual Americas | 26-Jun | 29-Jun | Global | USA |
| 3 | Mongoose: Developing Applications Foundation Workshop Part 2 | Virtual Americas | 24-Jul | 27-Jul | Global | USA |

The Public Schedule presents currently scheduled training events.
For a complete listing, please visit campus.infor.com (US) or campus-nonus.infor.com (all other locations).



Infor Technology Platform

| Level | Course Name | Location Name | Start Date | End Date | Course Links | |
|----------------------|---|------------------|------------|----------|------------------------|---------------------|
| Infor Ming.le | | | | | | |
| 2 | Infor Ming.le: Configuring Infor Ming.le with Infor Lawson Applications | Virtual Americas | 11-May | 12-May | Global | USA |
| 2 | Infor Ming.le: Configuring Infor Ming.le with Infor Lawson Applications | Virtual Americas | 17-Aug | 18-Aug | Global | USA |
| Infor ION | | | | | | |
| 3 | ION: Developing BODs for Lawson | Virtual Americas | 12-Jun | 14-Jun | Global | USA |
| 3 | ION: Integrating with Lawson | Virtual Americas | 8-May | 10-May | Global | USA |
| 3 | ION: Integrating with Lawson | Virtual Americas | 14-Aug | 16-Aug | Global | USA |

The Public Schedule presents currently scheduled training events.
For a complete listing, please visit campus.infor.com (US) or campus-nonus.infor.com (all other locations).

Infor Lawson – Self-Directed Learning

| Course Name | Description | Hours | Course Links | |
|---|--|-------|--------------|-----|
| Lawson: Administering Smart Office - Self-directed Learning | This course covers fundamentals needed for understanding Infor Smart Office (ISO). It also provides Infor Lawson administrators with knowledge about tasks associated with effective implementation and maintenance of Smart Office. This training is for versions 10.x and all previous versions. | 16 | Global | USA |
| Lawson: Administering Lawson Data - Self-directed Learning | This course covers Lawson data management, which includes copying and migrating Lawson System Foundation (LSF) source code data between product lines, transferring LSF application data between product lines, and migrating LSF user jobs and reports. This course also includes Landmark application data management between product lines and environments, as well as methods for migrating Infor Lawson Design Studio customizations, IPA processes, and Infor Smart Office personalizations. This training is for version 10 and all previous versions. | 16 | Global | USA |
| Lawson: Administering Users - Self-directed Learning | This course provides the Infor Lawson administrator the knowledge to provision different types of resources/users in the Infor Lawson System Foundation and Infor Landmark Technology Runtime environments using the Infor Security Administrator tool. The course focuses on administering users by assigning roles, identifying security classes, and managing access rights to Infor applications such as Infor Rich Client, Infor Ming.le™, Infor Lawson for Infor Ming.le, Infor Lawson Mobile Supply Chain Management (MSCM), and Infor Lawson Business Intelligence (LBI). The course will also cover using utilities to do a mass user upload. | 24 | Global | USA |
| Lawson: Configuring and Administering Accounts Payable - Self-directed Learning | This course covers Accounts Payable setup, as well as processing, maintenance, and accessing Accounts Payable related information. This training is for versions: 10.0.6 and all previous versions. | 32 | Global | USA |
| Lawson: Configuring and Administering Accounts Receivable - Self-directed Learning | This course covers tasks associated with the Lawson® Accounts Receivable application. This training is for version(s): 10.0.x and all previous versions. | 24 | Global | USA |
| Lawson: Configuring and Administering Asset Management - Self-directed Learning | This course covers how to configure and administer the Asset Management application in Infor Lawson Financials. Through a series of hands-on exercises, students will learn how to set up Asset Management, define the reporting structure, define processing parameters, as well as add, adjust, transfer, and dispose of assets. Report creation and auditing setup and management are also discussed. This training is for version 10.x and all previous versions. | 24 | Global | USA |
| Lawson: Configuring and Administering Billing - Self-directed Learning | This course covers how to set up Billing, set up item pricing, create invoices and billing adjustments, create and process recurring invoices, print and update invoices, and close the billing period. This training is for versions: 10.x and all previous versions. | 8 | Global | USA |
| Lawson: Configuring and Administering Billing and Revenue Management - Self-directed Learning | This course covers Billing and Revenue Management and how it works in conjunction with Project Accounting to bill customers and recognize revenue. This training is for version(s): 10 and all previous versions. | 40 | Global | USA |
| Lawson: Configuring and Administering Close Management - Self-directed Learning | This course covers foundational instruction on Infor Lawson Close Management. Topics include how to create, schedule, and manage period end close activities across the extended financial close cycle. This training is for versions 10.1 or 9.1 of the application and Lawson System Foundation version 9.0.1.8 and higher. | 16 | Global | USA |
| Lawson: Configuring and Administering General Ledger - Self-directed Learning | This course covers instruction on how to configure Lawson® General Ledger with basic General Ledger setup and maintenance information. Users will be trained on commonly used functionality associated with the General Ledger application. This training is for versions: 10.0.6 and all previous versions. | 32 | Global | USA |
| Lawson: Configuring and Administering General Ledger Allocations - Self-directed Learning | This course covers how to configure Infor Lawson® General Ledger Allocations and focuses on the most commonly used tasks: how to build an allocation, run an allocation, and review an allocation. Additional tasks can be found in the Allocations User Guide. This training is for versions: 10.0.6 and all previous versions. | 8 | Global | USA |
| Lawson: Configuring and Administering Inventory Control - Self-directed Learning | This course covers the knowledge and skills around setting up the Inventory Control application, including selecting the appropriate forms to create Inventory Control transactions, managing physical inventory, replenishing and closing inventory cycles and creating reports for inventory controls. This training is for versions 10.x and all previous versions. | 16 | Global | USA |
| Lawson: Configuring and Administering Invoice Matching - Self-directed Learning | This course covers setup of the Invoice Matching application and processing match invoices. Topics include invoice match setup, the processes for invoice entry, setup, and reconciliation, and how to set up invoice messaging to notify buyers when entry or reconciliation discrepancies exist. This training is for versions: 10.x and all previous versions. | 24 | Global | USA |
| Lawson: Configuring and Administering Project Accounting - Self-directed Learning | This course provides the information and practice needed to perform Project Accounting functions. This training is for version 10.0.x and all previous versions. | 40 | Global | USA |
| Lawson: Configuring and Administering Purchase Order - Self-directed Learning | This course covers foundational instruction on how to set up, configure, and administer Infor Lawson Purchase Order. This training is for version: 10 and all previous versions. | 24 | Global | USA |
| Lawson: Configuring and Administering Reconciliation | This course covers foundational instruction on Infor Lawson Reconciliation Management. You will learn how to use account reconciliation to control the quality | 16 | Global | USA |

The Public Schedule presents currently scheduled training events.

For a complete listing, please visit campus.infor.com (US) or campus-nonus.infor.com (all other locations).

Public Schedule

1 Level 1: Overview and Use

2 Level 2: Configuration and Administration

3 Level 3: Installation and Integration

| Course Name | Description | Hours | Course Links | |
|--|---|-------|--------------|-----|
| Management - Self-directed Learning | and accuracy of financial statements by effectively managing and performing reconciliations. This training is for versions: 10.1.1 and all previous versions. | | | |
| Lawson: Configuring and Administering Requisitions - Self-directed Learning | This course covers Lawson Requisitions features and set-up processes for effectively managing your organization's requisition activities. This training is for version(s): 10x and all previous versions. | 8 | Global | USA |
| Lawson: Configuring and Administering Strategic Sourcing and Supplier Portal - Self-directed Learning | This course covers the basics of each module within the Strategic Sourcing application, as well as integration considerations and their effects on the procurement process. This course also includes Supplier Portal setup and configuration. This training is for version(s): 10.1.1 and all previous versions | 24 | Global | USA |
| Lawson: Creating Landing Pages with Landing Page Designer for Landmark Applications - Self-directed Learning | This course covers the skills and knowledge required to create web landing pages for Infor Landmark applications using Landing Page Designer. The course includes practical exercises on how to modify and personalize landing pages. | 4 | Global | USA |
| Lawson: Creating Reports with General Ledger Report Writer - Self-directed Learning | This course covers techniques for setting up and using Report Writer for General Ledger. This training is for version(s): 10.x and all previous versions. | 16 | Global | USA |
| Lawson: Customizing Lawson Applications with Design Studio and JavaScript - Self-directed Learning | This course covers skills and knowledge around Infor® Lawson Design Studio V10, a browser based drag and drop graphical development environment which can be used to customize or enhance Infor Lawson applications. | 24 | Global | USA |
| Lawson: Designing Lawson Smart Reports - Self-directed Learning | This course covers administering and designing Lawson Smart Reports using the Infor Lawson Smart Reports Designer. This training is for versions: 9.0.1 and 10.0.X of Lawson applications. | 16 | Global | USA |
| Lawson: Developing Mashups with Mashup Designer - Self-directed Learning | This course covers building a mashup application using Infor Mashup Designer to complete a Lawson (S3) process using input data from one or more Lawson sources, as well as performing lookups or research such as data analysis. This course focuses and uses Lawson S3 data. | 24 | Global | USA |
| Lawson: Financials and Supply Chain Applications Foundation - Self-directed Learning | This course covers topics that serve as an introduction for implementation project teams including Financials and Supply Chain Management applications running on Lawson System Foundation (LSF) and Landmark. Topics include introductions to the applications most often implemented, how they work together, and setup considerations for business use. This training is for versions: 10.x and all previous versions. | 32 | Global | USA |
| Lawson: Technology Foundation - Self-directed Learning | This course introduces Infor Lawson System Foundation (LSF) and Infor Landmark Technology platforms and tools. In this two-day foundation course, learners will have an overview of Infor LSF, Infor Landmark Technology, and the administrative and end-user interfaces for both platforms. Included in this course are business process management tools such as Business Process Management, Infor Process Automation, Infor Lawson Add-ins for Microsoft® Office®, Infor Spreadsheet Designer, Infor Lawson Design Studio, and Application Development Workbench as well as an overview of security, user administration and monitoring, and Infor technology platform components consisting of Infor ION®, Infor Ming.le™, and Infor Business Vault. | 16 | Global | USA |
| Lawson: Using Microsoft Office Add-Ins - Basic - Self-directed Learning | This course covers installing and using Infor Lawson Add-Ins for Microsoft® Office. This training is for versions: 10.0.x and all previous versions. | 8 | Global | USA |
| Lawson: Using Smart Office - Self-directed Learning | This course introduces the purpose, benefits, and functionality of Infor Smart Office, commonly referred to as Smart Office. Course topics include personalizing and navigating Smart Office, modifying Smart Office settings, working with forms, jobs, and reports, as well as accessing and querying data. This training is for versions: 10.2 and all previous versions. | 8 | Global | USA |
| Lawson: Using Spreadsheet Designer for Microsoft Excel - Self-directed Learning | This course demonstrates how to use the features and functions of Infor Spreadsheet Designer® to create queries records in Lawson applications built on Landmark. The exercises illustrate how to gather information based on your specific needs and how to utilize Excel to the format data and create reports from that data. This course also demonstrates how to update Lawson applications built on Landmark. | 4 | Global | USA |
| Lawson: v10 Administering Security - Self-directed Learning | This course covers how to set up security roles, classes, profiles, and rules; how to grant access to data sources, forms, and files; and how to secure printers, job queues, environment services, reports, users, and security. This training is applicable for the Infor Lawson Security version 10.x and 9.x. | 32 | Global | USA |
| Lawson: v9x - v10x Administering System Foundation Differences - Self-directed Learning | This course covers the changes to architecture and maintenance procedures of Infor Lawson System Foundation. This training is for versions: 10.0.8 and all previous versions. Note: Infor Landmark Technology is covered only at the support level. Administrators should attend the Infor Landmark Foundation and Administration (5 day) course for exposure to detailed architecture and maintenance procedures for Infor Landmark Technology products. | 24 | Global | USA |

The Public Schedule presents currently scheduled training events.

For a complete listing, please visit campus.infor.com (US) or campus-nonus.infor.com (all other locations).



Infor HCM – Self-Directed Learning

| Course Name | Description | Hours | Course Links | |
|---|--|-------|--------------|-----|
| Global HR: v11 Foundation - Self-directed Learning | This course introduces Global Human Resources (Global HR) and its components. Included is an overview of each of the core modules, their purpose and benefits, and how each module is used; format and navigation of the Infor Rich Client; an introduction to personalizing and configuring components in Global HR; an overview of security in Global HR; and an introduction to how Global HR interfaces with other systems. The course concludes with a discussion of the key activities that need to be completed prior to a Global HR implementation. This course is a prerequisite requirement for the Global HR: v11 Configuring and Administering Global Human Resources course. This training is for versions: 11.x and higher. | 16 | Global | USA |
| Global HR: v11 Configuring and Administering Global HR - Self-directed Learning | Infor Global Human Resources (Global HR) is the core application for the Infor Talent Management (TM) suite. This course covers the setup, configuration, and administration of the organization structure and its integration with other TM modules. The course includes data setup and configuration of key components such as competencies, skills, currencies, jobs, positions, and resources. The course also includes the setup, configuration, and administration of the core HR modules – Employee Relations, Position Budget Management, Occupational Health, and Employee Safety. Also included in this course is an overview of converting data, the Infor Global HR interface process, interfacing data from Infor Global HR to Lawson S3 Human Resource Management (HRM), mapping fields in Infor Global HR to Lawson S3 HRM, security setup, and Async and My Actions. Global Human Resources: Foundation course is a prerequisite requirement for this course. This training is for versions 11.x and higher. | 40 | Global | USA |
| Global HR: v11 Configuring and Administering Benefits - Self-directed Learning | This course is essential for benefit managers, analysts and specialists in creating benefits plan structures, defining flex and benefit plans, and creating and maintaining enrollments for employees, retirees, and United States of America (USA) Consolidated Omnibus Budget Reconciliation Act (COBRA) participants. Benefits managers, analysts and specialists will also learn to use reports, processes, imports and exports to improve efficiency. This training is for version 11.0.0. | 24 | Global | USA |
| Global HR: v11 Configuring and Administering Absence Management and Time Entry - Self-directed Learning | This course covers an overview of Absence Management and Time Entry, its business uses, plans and structures, accruals setup, impact of Absence Management on Global HR, Self-Service requests and approvals, and the Absence Management cycle processing. This training is for version: 11.x. | 32 | Global | USA |
| Global HR: v11 Configuring and Administering Security - Self-directed Learning | This course covers Global Human Resources (Global HR) security setup, configuration, and administration which includes creating and managing actors, roles, and security classes. Applying their knowledge of security setup, the participants will configure security using real-world examples and scenarios. Also included is configuring organizational access, the differences between Infor Lawson Security (Lawson System Foundation (LSF)) and Global HR Landmark security setup, how Infor Lawson Security and Global HR Landmark security communicate with each other, proxy management, reporting, and testing and troubleshooting. This training is for version 11.0. | 16 | Global | USA |
| Global HR: v11 Designing Reports - Self-directed Learning | This course covers an overview of Global HR reporting features, including creation and analysis of the EEO-1, VETS-100 and Employee Turnover reports. The course will also provide hands-on exercises using the Infor Spreadsheet Designer to add and modify records in the Global HR application using the query and upload methods. This training is for versions: Talent Management v11 and all previous versions. | 8 | Global | USA |
| HCM Analytics: v11 Configuring and Administering HCM Analytics - Self-directed Learning | This course covers configuring Human Capital Management (HCM) Analytics, designing reports that provide greater visibility into identification of key metrics, possible savings opportunities, performance management, and role-based insight. Application administration tasks associated with report design and creation are also included. This training is for version(s): 11.x and all previous versions. | 16 | Global | USA |
| Talent Management: v11 Configuring and Administering Talent Acquisition - Self-directed Learning | This course covers planning, integration factors, and setup of Talent Acquisition components such as roles, code, templates, automation, and configuration of internal and external recruitment processes. | 24 | Global | USA |
| Talent Management: v11 Configuring and Administering Goal and Performance Management - Self-directed Learning | The purpose of this course is to provide the information and practice needed to successfully set up and manage goals, and to implement and use performance appraisals. | 16 | Global | USA |
| Talent Management: v11 Configuring and Administering Compensation Management - Self-directed Learning | This course covers the information and practice needed to successfully award and incent employees using Infor Compensation Management. This training is for Infor Compensation Management version: 11. | 24 | Global | USA |
| Talent Management: v11 Configuring and Administering Development Planning - Self-directed Learning | This course covers the management of development activities of an organization which could include Learning Budgets, integration with Learning Management, development of activities and catalogs along with creation and assignment of checklists. This training is for versions: 11x and higher. | 24 | Global | USA |
| Talent Management: v11 Configuring and Administering | This course covers the functionality and use of Succession Management, a component of the Infor Talent Management suite. Participants will learn how to configure the application, define key data, set up career paths, create succession | 16 | Global | USA |

The Public Schedule presents currently scheduled training events.

For a complete listing, please visit campus.infor.com (US) or campus-nonus.infor.com (all other locations).

Public Schedule



Level 1: Overview and Use



Level 2: Configuration and Administration



Level 3: Installation and Integration

| Course Name | Description | Hours | Course Links | |
|--|--|-------|------------------------|---------------------|
| Succession Management - Self-directed Learning | and talent pools, and use nine-block charts and other tools to make succession decisions. This training is for version: 11 and all previous versions. | | | |
| Lawson HRM: Configuring and Administering Personnel - Self-directed Learning | This course provides a complete introduction to the Infor Personnel Administration application, beginning with the setup of the framework for competency and position management. It also includes position and job budgets, using requisitions to define and fill job openings, analyzing wages, Equal Employment Opportunity (EEO) and Employment Equity Act (EEA), health and safety reporting, and training administration. This training is for versions: 10.0.6 and all previous versions. | 24 | Global | USA |

The Public Schedule presents currently scheduled training events.
For a complete listing, please visit campus.infor.com (US) or campus-nonus.infor.com (all other locations).

Infor CloudSuite Financials & Supply Management – Self-Directed Learning

| Course Name | Description | Hours | Course Links | |
|--|--|-------|--------------|-----|
| CloudSuite Financials: Administering Project Ledger - Self-directed Learning | This course covers how to administer and maintain projects in Project Ledger. It includes topics such as setting up new projects, processing transactions for end-to-end project accounting, and reporting. | 8 | Global | USA |
| CloudSuite Financials: Configuring and Administering Global Ledger - Self-directed Learning | This course covers how to configure, administer, and process transactions in Infor Global Ledger. A basic understanding of the configuration console and how to generate reports is required. The course provides an overview of Global Ledger including customer use, basic operation and integrations with other CloudSuite applications. | 32 | Global | USA |
| CloudSuite Financials: Configuring and Administering Global Ledger Allocations - Self-directed Learning | This course covers how to configure and administer allocations within the CloudSuite Financials and Supply Management Global Ledger. Participants will define and build basic and multi-line allocations, and use custom totals and computes to create user-defined formulas to calculate allocations. | 8 | Global | USA |
| CloudSuite Financials: Configuring and Administering Payables - Self-directed Learning | This course covers configuring, administering, and processing transactions in Payables. Topics include an overview of Payables, using Configuration Console for modifications and personalizations, entering invoices, workflow routing, configuring approvals, invoicing, payments, auditing, and generating reports. | 32 | Global | USA |
| CloudSuite Financials: Configuring and Administering Receivables - Self-directed Learning | This course covers setting up customers and configuring automation and management of cash application and deduction management processes in Infor CloudSuite Receivables. The student will gain an overview of how Infor CloudSuite Receivables integrates with other Infor CloudSuite Financial applications. | 24 | Global | USA |
| CloudSuite Supply Management: Configuring and Administering Contract Management - Self-directed Learning | This course covers the setup, configuration, administration, process, and management of vendors and contracts in Contract Management in Infor CloudSuite™ Supply Management. This course includes how to navigate the user interface (UI), security basics that pertain to Contract Management, primary, administrative, and shared setup of key components, vendor and supplier setup, the different ways to create and process contracts, as well as the process flows for contract approval. Also included in this course is the configuration of pricing and rebates, cost defaulting, and contract utilities. | 40 | Global | USA |
| CloudSuite Supply Management: Configuring and Administering Purchasing - Self-directed Learning | This course covers how to configure, administer, and process transactions in Infor Purchasing. The course provides an overview of Purchasing including customer use, basic operation, and integrations with other Infor CloudSuite Financials & Supply Management applications. | 24 | Global | USA |

The Public Schedule presents currently scheduled training events.

For a complete listing, please visit campus.infor.com (US) or campus-nonus.infor.com (all other locations).

Infor M3 – Self-Directed Learning

| Course Name | Description | Hours | Course Links | |
|--|---|-------|--------------|-----|
| M3: v13x Administering Documents and Media - Self-directed Learning | The purpose of this course is to teach you how to set up the distribution of the Infor M3 reports and documents. This course covers an overview of managing documents and media, key settings, and troubleshooting output issues. This training is for versions: 13.3 and all previous versions. | 8 | Global | USA |
| M3: v13x Administering LifeCycle Manager - Self-directed Learning | This one-day course takes a hands-on approach that allows users to gain an understanding of the tasks required to secure LifeCycle Manager, download and apply fixes, and administer and maintain Infor M3. Different types of fixes are described. In the class, participants execute tasks, learn the standard procedure for applying standard fixes and customer modifications, and work through scenarios that illustrate the functionality available. This training is applicable for the following Infor M3 version: 13.3. Participants must obtain Infor Xtreme logon credentials from your administrator before attending the class. | 8 | Global | USA |
| M3: v13x Administering M3 Enterprise Collaborator (MEC) - Self-directed Learning | This course covers what MEC is, MEC internal architecture, how to set up new partner agreements, import and set up new M3 business messages, product configuration and maintenance. This training is for versions: 11.4 and previous MEC grid versions. | 16 | Global | USA |
| M3: v13x Administering Security - Self-directed Learning | The purpose of this course is to explain how M3 controls end user and system administrator access to the system. It covers the Smart Office logon process, securing access to various environments, access to M3 companies and divisions, authority to perform individual functions, and ultimately into protecting data and even controlling access to individual fields on a screen. It teaches you how to administer security at individual or group/role level. It also explains how Infor ION Grid security controls system administrator access. Hands-on exercises will give you the opportunity to practice what has been learned. This training is applicable for the following Infor M3 version(s): 13.3. | 16 | Global | USA |
| M3: v13x Administering Smart Office - Self-directed Learning | This course covers how administrators can control the functionality and customizations in Infor Smart Office by deploying settings to different individuals and groups. Administrators will also gain the knowledge to troubleshoot using Infor Smart Office logs. This training is for version: 13.3. | 8 | Global | USA |
| M3: v13x Administering the System - Introduction - Self-directed Learning | This course introduces the various servers and software components in a gridded Infor M3 installation, the basic architecture of the product, basics of the Infor ION Grid and concepts such as Infor M3 environments, and Infor M3 companies and divisions. The course also describes the file structure for the grid and core Infor M3 applications. Participants will be introduced to the Infor M3 management and monitoring interfaces, and shown some basic configuration options. Also covered are daily tasks such as enrolling users and configuring user menus. Hands-on exercises will give you the opportunity to practice what has been learned. This training is for versions: 13.3 (Infor M3 BE 15.1.3). | 16 | Global | USA |
| M3: v13x Administering the System - Advanced - Self-directed Learning | This course covers managing and scheduling jobs, configuring the servers and services involved in the Infor M3 Output Solution and routing users' printed output to the correct printer, e-mail, fax, etc. In addition is included in the topics working with program fixes and modifications, how these are configured (excluding the installation process), how to detect which program versions are in use in different environments, and how to change the runtime behavior of the Infor M3 application. The course also covers copying/moving data between environments. It aims to teach you the knowledge required to become more self-sufficient in managing your Infor M3 installation. This training is for version: 13.3 (Infor M3 BE 15.1.3). | 16 | Global | USA |
| M3: v13x Configuring Costing and Internal Accounting - Self-directed Learning | The purpose of this course is to describe the main configurations in Infor M3 for purchase costing, distribution costing, product (manufacturing) costing, and the Infor M3 Costing Toolbox. This training is applicable for Infor M3 version: 13.X. | 24 | Global | USA |
| M3: v13x Configuring Customer Orders - Self-directed Learning | This course covers how the main functions of Customer Order Management are supported by M3 and can be configured to suit the business requirements of individual organizations. This training is for version: 13.3. | 32 | Global | USA |
| M3: v13x Configuring Financial Accounting - Self-directed Learning | This course describes how the main functions of financial accounting, including Accounts Payable, Accounts Receivable and General Ledger, are supported by Infor M3 and can be configured to suit the business requirements of individual organizations. This training is for version: 13.3. | 40 | Global | USA |
| M3: v13x Configuring H5 Personalizations - Self-directed Learning | Infor has a strong focus on user experience with the aim of following the mega trends of new user interfaces, new platforms and different devices. Infor H5 is Infor M3's thin client that supports multiple browsers and multiple devices. This adds a whole new dimension to the accessibility of Infor M3 across systems and ensures that Infor M3 applications can be accessed across a customer's IT infrastructure. Infor H5 allows user-specific customization and personalization that puts the right tools and information on every user's screen. Infor ION Enterprise Search (IES) is a deeply integrated, intuitive, simple-to-use search application for Infor and non-Infor data to help organizations search and find relevant information securely and quickly. This course is presented from the user perspective and covers the Mform personalization options; the basics of Infor IES; how to use web mashups scripts, and web applications; and finally how to use tablets to access Infor M3 data. | 8 | Global | USA |
| M3: v13x Configuring ION Enterprise Search - Self-directed Learning | This course covers the key features of ION Enterprise Search (IES) in connection to Infor Smart Office (and Infor M3). You will practice different kind of searches, how to trigger searches, and how to monitor the result. You will configure searches and | 8 | Global | USA |

The Public Schedule presents currently scheduled training events.

For a complete listing, please visit campus.infor.com (US) or campus-nonus.infor.com (all other locations).

Public Schedule

1 Level 1: Overview and Use

2 Level 2: Configuration and Administration

3 Level 3: Installation and Integration

| | | | | |
|--|---|----|--------|-----|
| | review the most important setting. This training is for version v13x (ION Enterprise Search version 11.0.4). | | | |
| M3: v13x Configuring Lot and Allocation Control - Self-directed Learning | This course covers the main functions of lot and allocation control, including the disposal and tracing of inventory balances for all types of products from simple stock-keeping units to lot-controlled products that are supported by Infor M3 and can be configured to suit the business requirements of individual organizations. This training is for version 13.3 and all previous 13.x versions. | 16 | Global | USA |
| M3: v13x Configuring Manufacturing Orders - Self-directed Learning | This course is intended for consultants and partners charged with implementing the Manufacturing Management functionality of Infor M3. The course explores the main Manufacturing Management functions, how they are supported by Infor M3, and how they can be configured to suit the business requirements of individual organizations. This training is for version: v13x. | 16 | Global | USA |
| M3: v13x Configuring Purchase Orders - Self-directed Learning | The purpose of this course is to provide an overview of the main purchase order configurations in Infor M3. Topics covered are: process overview; processing of purchase orders; general configurations; supplier and item configurations; purchase order configurations; configure and manage goods receipt; configure and manage quality inspection and claims; configure and manage additions to the ordering process; and configure and manage procurement statistics. This training is for version 13.3 and all previous versions. | 32 | Global | USA |
| M3: v13x Configuring Tactical and Operational Planning - Self-directed Learning | This course addresses a series of design questions to consider when implementing tactical and operational planning. It also covers some of the main programs used to establish and implement the configuration settings once needs have been defined. This training is for version: 13.x and all previous versions. | 24 | Global | USA |
| M3: v13x Configuring Warehouse Management and Distribution Orders - Self-directed Learning | This course describes how the main functions of warehouse management and distribution order management including such topics as outbound delivery processing, internal warehouse processes and processing distribution order goods receiving flow are supported by Infor M3 and can be configured to suit the business requirements of individual organizations. This training is for version 13.x and all previous versions. | 40 | Global | USA |
| M3: v13x Customizing Reports with Output Designer - Self-directed Learning | This course covers how to use StreamServe to design and manage Infor M3 outputs. This training is for version: 13.3 and all previous versions. | 24 | Global | USA |
| M3: v13x Designing Mashups - Introduction - Self-directed Learning | This course covers the information and practice you need to successfully create and implement Mashups by using the Mashup Designer tool. Mashup Designer is a development environment for creating Mashups from Infor products (for example, Infor M3 applications, S3 applications or Document Archive Foundation) or other sources. This training is applicable for Infor M3 versions: 13.3 and all previous versions. | 8 | Global | USA |
| M3: v13x Designing Mashups - Advanced - Self-directed Learning | This course covers the more advanced controls like MI, Custom list, using a script to trigger a Mashup in a M3 program, localization, and deployment. This training is for version(s): 13.3 and all previous versions. | 8 | Global | USA |
| M3: v13x Developing Smart Office Personalized Script - Self-directed Learning | This course covers how to personalize Infor Smart Office using Personalized Scripts. Covered topics include an overview of using Microsoft JScript.NET, creating scripts, running and debugging scripts, creating a script that uses MForms Automation, and deploying scripts. This training is for version: Infor M3 13.3. | 8 | Global | USA |
| M3: v13x Developing Web Services - Self-directed Learning | The purpose of this course is to provide an introduction to M3 Web Services Designer, enabling an understanding of the underlying architecture, and hands-on experience of configuring, modeling, deploying, and testing web services using the M3 Web Services Designer. This training is for versions: v13x and all previous 13x versions. | 16 | Global | USA |
| M3: v13x Developing in M3 Enterprise Collaborator (MEC) - Self-directed Learning | This course covers an overview on how to develop new business messages using MEC. This training is for versions: M3 BE 13.3/ MEC 11.4.3 and previous MEC grid versions. | 24 | Global | USA |
| M3: v13x Developing with M3 Adaptation Kit (MAK) - Self-directed Learning | The purpose of this course for developers (technical consultant) is to have a basic knowledge on the use of Eclipse/MAK to modify or create new programs, files, view definitions, Out interfaces, language files and field help. This includes how to use MAK to debug programs. The goal for the support group is to have an overall knowledge of MAK with the primary goal of knowing how to debug a program. This training is applicable for the following Infor M3 version(s): MAK and all previous versions. | 16 | Global | USA |
| M3: v13x Equipment Rental Foundation - Self-directed Learning | This course covers concepts, principles, and how to execute fleet management, order-to-cash contracts, and service-to-available. It also covers the basic data required for the main rental processes. Finally, it describes how to manage some additional flows to the rental process, such as: stand down; up-rent; involuntary sale; partial return of bulk items; minimum rent; full credit; change site address; change inbound location; exchange handling; generic items; transfer serial number; and scrapping serial number. This training is for version 13.3. | 24 | Global | USA |
| M3: v13x Fashion Foundation - Self-directed Learning | The purpose of this course is to help you understand the main characteristics of the Implementation Accelerator for Fashion pre-configured solution. This course provides learners with knowledge on how Infor M3 focuses on building an integrated foundation for the core needs and processes of the fashion industry from design, source, and distribute companies (brand owners) to apparel cut and sew manufacturers (contract manufacturers). For sourcing companies (brand owners), the manufacturing lesson will not be addressed. A "light" version of manufacturing can be addressed in the embellishment lesson. For manufacturing companies, the embellishment lesson will not be addressed. This training is for version 13.3 and all previous versions. | 28 | Global | USA |
| M3: v13x Food and Beverage Foundation - Self-directed Learning | This course introduces how Infor M3 manages and integrates the business processes of a food and beverage company. This course covers customer order fulfillment, procurement, and manufacturing, as well as financial management for a | 28 | Global | USA |

The Public Schedule presents currently scheduled training events.

For a complete listing, please visit campus.infor.com (US) or campus-nonus.infor.com (all other locations).

Public Schedule

1

Level 1: Overview and Use

2

Level 2: Configuration and Administration

3

Level 3: Installation and Integration

| | | | | |
|---|---|----|--------|-----|
| | food and beverage company. This training is for version(s): 13.3 and all previous versions. | | | |
| M3: v13x Introducing the Technology - Self-directed Learning | This course provides participants with a basic understanding of the Infor M3 technical framework and of the product offered. It is designed to demonstrate the technical architecture of the different components, as well as explain what they are used for. The course also includes common terminology used in the area of Java Foundation and Tools. This training is for version 13.3 and all previous versions. | 8 | Global | USA |
| M3: v13x Manufacturing Foundation - Self-directed Learning | This course provides learners with knowledge on how Infor M3 manages and integrates the business processes of a manufacturing company. This course takes a hands-on approach that allows users to gain an understanding of the operational activities necessary to run the core functions of a manufacturing company as an integrated business solution. The learners execute basic functions, learn the different settings and work through scenarios that illustrate available functionality. This training is applicable for Infor M3 versions: 13.3 and all previous versions. | 28 | Global | USA |
| M3: v13x Migrating Data with the SmartData Tool - Self-directed Learning | This course introduces the SmartData Tool, explains what it is used for, and describes how it works with Infor Web Services to ensure that only valid data is loaded into the Infor M3 transaction database. This training is for Infor M3 Version 13 and all previous versions. | 8 | Global | USA |
| M3: v13x Programming in the Software Development Kit (SDK) - Self-directed Learning | This course covers how to develop Infor Smart Office applications using the Software Development Kit (SDK) and Windows® Presentation Foundation (WPF). It incorporates instructor demonstrations, hands on student activities, and practice sessions on how to create custom applications and Mashup controls in Microsoft® Visual Studio®, and how to deploy them with some of the unique features in Infor Smart Office. Infor Smart Office is a modern user interface (UI) integration platform developed for both Infor M3 and S3. Infor Smart Office was developed to give more user experience to Infor M3 and S3 users. It is based on the Microsoft .NET technology including WPF. Because of this, it provides developers a comprehensive and consistent programming model for building applications in Infor Smart Office together with the Infor Smart Office SDK framework. | 16 | Global | USA |
| M3: v13x Using H5 - Introduction - Self-directed Learning | This half-day course will provide the information and practice you need to successfully navigate and use Infor M3 H5 Enterprise (sometimes referred to as just H5) in a user perspective. Infor M3 H5 is an interface to your Infor M3 applications. It is an information workplace that lets you customize forms and lists and collaborate with co-workers. This course covers the main features in Infor M3 H5; how to work with MForms; and the basic Infor M3 H5 settings. This training is for Infor M3 13.3 and all previous versions. | 4 | Global | USA |
| M3: v13x Using Smart Office - Introduction - Self-directed Learning | This course will provide the information and practice you need to successfully navigate and use Smart Office for Infor M3 in a user perspective. Infor Smart Office is an information workplace that lets you customize forms and lists and collaborate with coworkers. This course covers the main features on the Infor Smart Office canvas; how to work with Mforms; and the basic Infor Smart Office settings. This training is for Infor M3 13.3 (Infor Smart Office 10.2.1.0) and all previous versions. | 8 | Global | USA |
| M3: v13x Using Smart Office - Advanced - Self-directed Learning | This course is presented from the user perspective and covers the Mform personalization options; the basics of Infor ION Enterprise Search (a deeply integrated, intuitive, simple-to-use search application); how to use mashups as local applications; and how to insert scripts. This training is for Infor M3 13.3 (Infor Smart Office 10.2.1.0) and all previous versions. | 4 | Global | USA |

The Public Schedule presents currently scheduled training events.

For a complete listing, please visit campus.infor.com (US) or campus-nonus.infor.com (all other locations).



Infor CPQ (PCM) – Self-Directed Learning

| Course Name | Description | Hours | Course Links | |
|--|--|-------|------------------------|---------------------|
| CPO: (PCM) Using Infor Product Configurator - Self-directed Learning | The purpose of this course is for new rules designers to acquire the necessary skills to create and maintain basic sales and pricing rules in their product models. This training is applicable for the following Infor Product Configurator version: 8.1 version. | 32 | Global | USA |
| CPO: (PCM) Using Infor Sales Portal - Self-directed Learning | This course covers the features and functionality of Sales Portal, which includes configuring, quoting, ordering, and managing of configurable and standard products. This training is for version(s): 8.1. | 16 | Global | USA |

The Public Schedule presents currently scheduled training events.
For a complete listing, please visit campus.infor.com (US) or campus-nonus.infor.com (all other locations).



Infor LN – Self-Directed Learning

| Course Name | Description | Hours | Course Links | |
|---|---|-------|------------------------|---------------------|
| LN: Foundation - Self-directed Learning | This course provides an overview of the major modules in Infor LN. This course will expose participants to the Infor LN software and associated system processes and structures, thereby providing attendees with fundamental knowledge of Infor LN as an Enterprise Resource Planning (ERP) solution for global supply chain models. This course provides the foundation of information required for other Infor LN courses. This training is for version: 10.5. | 32 | Global | USA |

The Public Schedule presents currently scheduled training events.
For a complete listing, please visit campus.infor.com (US) or campus-nonus.infor.com (all other locations).



Infor Technology Platform – Self-Directed Learning

| Course Name | Description | Hours | Course Links | |
|--|--|-------|------------------------|---------------------|
| Infor BI: Optimizing Content with Dashboards and Self-Service - Self-directed Learning | This course covers creating dashboards from web content and Application Studio reports, and working with dashboards, including adding content to dashboards, using the Self-Service functionality, laying out and resizing dashboards, viewing, editing, saving, and sharing dashboards, setting dashboard properties, optimizing dashboard interactions, using additional dashboard functionality, using web extensions, and identifying the features and functionality of the Infor BI Dashboards app for mobile devices. This training is for version 11. | 8 | Global | USA |
| Infor Ming.le: Configuring Infor Ming.le with Infor Lawson Applications - Self-directed Learning | This course covers how to configure Infor Ming.le with Infor Lawson applications. You will learn how to how to configure the user interface to use Infor Ming.le, and configure Infor Lawson applications as context applications in Infor Ming.le. This training is for version: 11.1. | 16 | Global | USA |
| Infor Xi Platform: Using Infor Ming.le, ION Workflows, and Homepages with EAM - Self-directed Learning | This course provides a basic understanding of how to use Infor Ming.le™, Intelligent Open Network (ION®) workflows, and Homepages with Enterprise Asset Management (EAM). This training is for versions 11.2 and all previous versions. | 8 | Global | USA |

The Public Schedule presents currently scheduled training events.

For a complete listing, please visit campus.infor.com (US) or campus-nonus.infor.com (all other locations).



Infor d/EPM – Self-Directed Learning

| Course Name | Description | Hours | Course Links |
|--|---|-------|--|
| Infor d/EPM: Configuring and Administering Budgeting & Planning - Self-directed Learning | This course covers the scope and concepts of the Infor d/EPM Budgeting and Planning application, including an overview of the core functionality. The course covers the use of the product and then focuses on configuring and administering the product. This training is for version: 11.0. | 32 | Global USA |



641 Avenue of the Americas
New York, NY 10011
800-260-2640
infor.com

About Infor

Infor is fundamentally changing the way information is published and consumed in the enterprise, helping 70,000 customers in 194 countries improve operations, drive growth, and quickly adapt to changes in business demands. To learn more about Infor, please visit www.infor.com.

Copyright© 2017 Infor. All rights reserved. The word and design marks set forth herein are trademarks and/or registered trademarks of Infor and/or related affiliates and subsidiaries. All other trademarks listed herein are the property of their respective owners. This document is provided for informational purposes only and does not constitute a commitment to you in any way. The information, products and services described herein are subject to change at any time without notice. www.infor.com.
INFDTPI382111-en-US-0517-47