



Top 5 reasons to migrate to Infor M3

Infor is fully committed to leading the market with a suite of solutions to address the unique needs and changing market dynamics of food, beverage, chemical, and life science manufacturing companies. The foundation for this is Infor® M3, a comprehensive enterprise resource planning (ERP) solution designed to help process manufacturing companies respond to changes in customer demands, manage and speed up a global supply chain, meet regulatory compliance, and reduce waste.

Infor continues to focus its process manufacturing development resources on Infor M3. This approach helps ensure that our customers not only have a feature rich solution for today but a solution that will continue to meet their future needs. The latest version of Infor M3 demonstrates this well, as it provides process manufacturing companies a number of new and expanded capabilities, along with an industry-leading user interface. Here are five top reasons to migrate to M3.

1. Collaboration and insight for process manufacturers

Infor's enterprise technology bundle (OS) delivers a unified solution that all levels of the organization—from CEO to production worker—can use and benefit from. By taking advantage of the convergence of information, analytics, cloud computing, mobility, and social business, OS empowers business users to interact with systems and with each other like never before:

- **Collaboration:** OS enables your users to collaborate and share information across the organization, for improved visibility and better decision-making. OS also uses a single sign on for all your core Infor solutions, including M3, Optiva, and Enterprise Asset Management (EAM) via Infor Ming.le™.
- **Business orchestration:** OS evolves companies to a role-based, task-oriented approach using Homepages in combination with a service-oriented architecture to integrate processes across your enterprise IT landscape. Additionally, the configurable user experience provides short cuts, panel displays, favorites, and more.
- **Business information:** OS puts business intelligence at the core, changing the way your users work. These BI homepages are configurable per user.
- **M3 H5 UI:** The use of “thin client” interface, via Internet Explorer, Google Chrome and others, allows for reduced user hardware maintenance.
- **Open source:** Using open source technology provides greater flexibility, faster innovation and lower total cost of ownership while eliminating the risk of proprietary programming languages.

2. Expanded process manufacturing efficiency and flexibility

Release 13.4 provides process manufacturers a number of new features that meet the unique challenges and requirements of the industry. These new additions are based significantly on feedback from our customers, as well as select best-in-breed features found in some of our legacy ERP solutions, such as Adage. These include:

- **Multiple versions of single product:** This feature enables an optional version header to explicitly control and visualize both current and future versions of formulas, recipes and routes. Previous versions of Infor M3 managed these changes on the detailed material and operation line level, found less suitable to process industries.
- **Alternate manufacturing processes:** With this new feature, one item can now be linked to multiple processes in order to reflect the need to switch between alternate production processes. These alternate processes may introduce variations to routings, as well as formula variations. This new concept supports easy switching between primary and optional production lines, as well as formula changes due to seasonal availability of raw materials. There is a primary process used for costing and planning; alternate processes are selected at the time of Manufacturing Order Release.



- **Item pack:** With this feature, you can group multiple, similar items for production planning, into single bulk items and multiple output packs. This in turn enables production of bulk and packaged items, in a single continuous process as well as the production of packaged items from an existing bulk item already in stock.
- **Sub-lot:** This enables you to break a lot into separate, small, logistical units like cases and boxes; it also allows you to trace all receipts, movements and reclassifications within these sub-lots. Furthermore, it allows a unique identifier for each unit. The fill amount of each sub-lot is maintained and customers can be invoiced for products based on the actual fill amount—inventory is valued-based on the fill amount of each sub-lot.

3. New and enhanced planning and scheduling tools

Process manufacturing companies vary greatly on their needs for advanced planning, forecasting, and scheduling tools. The latest release of Infor M3 expands and enhances those options in a number of ways with these new tools:

- **Infor M3 Demand Planner:** Over the last year, a number of enhancements have been made to the core demand planner of M3. These include workflows for automating repetitive tasks, scripts to tailor extend functionality, improved flexibility to define forecasting algorithms, and numerous improvements to the user interface that drive user productivity.
- **Infor M3 Scheduling Workbench (SWB) and Infor M3 Planning Workbench (PWB):** These critical tools have been updated to include a redesigned homepage, easier manual rescheduling, interactive decision-making in the popular material-and capacity-workbenches, visibility to source of demand, and more than 25 other improvements.

- **Infor Demand+:** For companies with more complex planning needs, there is integration with the core demand forecasting components of Infor Demand+. For more information on Infor Demand+, please visit: www.infor.com/content/brochures/demand-plus.pdf

4. Improved quality and compliance

Both the Infor M3 Quality Management System (QMS) module and industry-leading Graphical Lot Tracker (GLT), offer new features that build on their ease of use and functionality. New features in release 13.4 include:

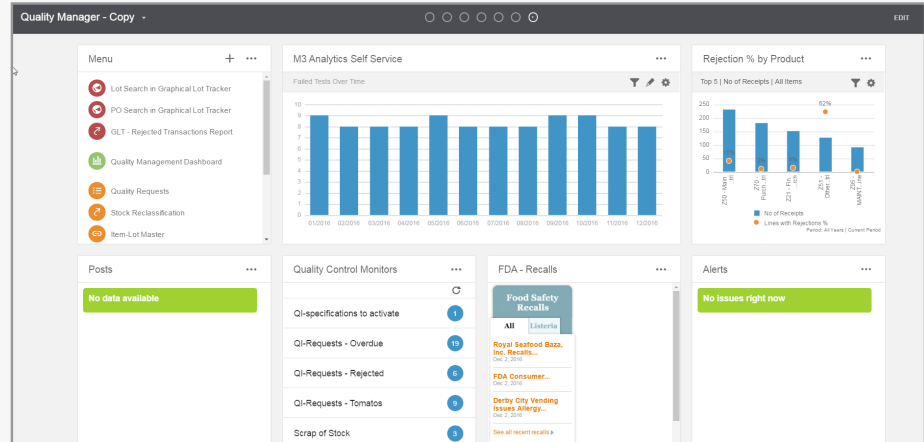
- **QMS phase 3:** The quality management module continues to be improved based on new market needs and customer feedback. New features in 13.4 include expanding support for distribution orders (DO) with spec matching, using attribute allocation, as well as trigger QI-testing at shipment and receipt of a DO, time-phased interval scheduling of re-testing inventory, and increasing the fields and free-text for COAs.
- **Graphical Lot Tracker enhancements:** New features for our market-leading M3 Graphical Lot Tracker include a new ingredients usage comparison report, the ability to track and trace by sub-lot and drill into the quality test data for lots that are in question.



Infor Ming.le Quality Home Page

The solution displays key indicators that are tracked by quality managers including:

- Failed tests over time
- Rejects
- Over-due testing
- Drill down



- SDS/Regulatory Reporting support:** Infor has developed a new partnership with the Wercs to provide hazard communication and chemical data management software for global regulatory compliance. While not specifically tied to the latest Infor M3 Process Manufacturing release, this expands options for Infor M3 Process Manufacturing customers.

5. More choices and integrations

Infor is committed to providing more options for our customers as they grow and expand. M3 has hundreds of APIs that allow simpler integration with other systems, including non-Infor applications. We continue to build out features and integrations based on feedback from our customers. Here are some of the new options available to customers:

- Pricing:** Release 13.4 expands the pricing options in Infor M3. Pricing and discounts have been extended to four decimal places. Additionally, catch weight pricing on the same item can be expressed in multiple catch weight units like pounds and kilograms, supporting sales into multiple international markets.
- Infor EAM:** Managing your assets is more than just minimizing downtime and maintenance costs. It is also a factor in reducing energy utilization and improving regulatory compliance. Infor EAM is a highly configurable solution that is now integrated with Infor M3 that can truly optimize your asset utilization.
- PLM Optiva:** This is now integrated to M3 for items, formulas, and quality specs.
- Infor Factory Track:** Infor M3 Process Manufacturing customers will soon have a new option for warehouse mobility, thanks to Infor Factory Track. This cloud-based, HTML 5 solution will provide a superior, multi-platform user experience.

Make the move to Infor M3

This latest release of M3 creates a great option for Infor customers on older ERPs to move to the most powerful solution for Process Manufacturers. With the flexibility of deploying on-premise, or in the cloud, Infor M3 can meet the needs of nearly any size process-manufacturing customer. Infor Consulting Services is available to help make your migration fast and economical, while also assisting you in minimizing or even eliminating any customizations you may have had in your older solutions. If your current ERP appears to be past its shelf life, now is the time to investigate all that M3 can provide for you.

To learn more, visit [Infor M3](#)



Follow us:



infor

Copyright © 2017 Infor. All rights reserved. The word and design marks set forth herein are trademarks and/or registered trademarks of Infor and/or related affiliates and subsidiaries. All other trademarks listed herein are the property of their respective owners. www.infor.com.

641 Avenue of the Americas, New York, NY 10011

INFDP1626454-en-US-1217-2